



MONTHLY MEMBERSHIP PROGRESS REPORT

District 6 NE

Results as of: 03/31/2018

GMT: WILLIAM PHILLIPI

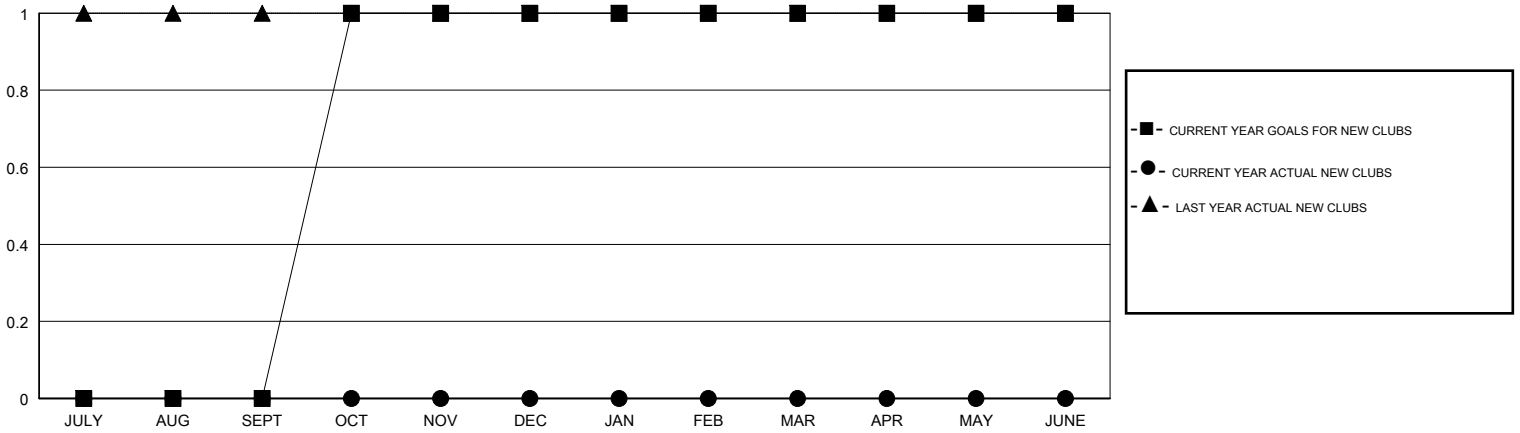
LOCATION COLORADO

GMT CA

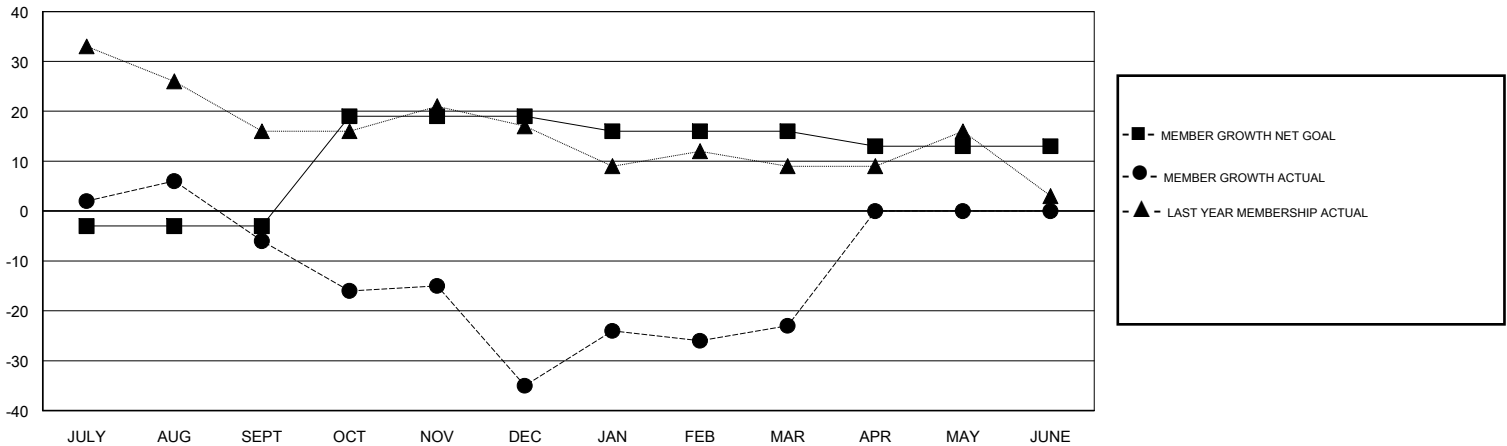
Clubs			
RESULTS FOR 2017-2018			
QUARTER	NEW CLUB GOAL	NEW CLUBS	DROPPED CLUBS
JULY/AUG/SEPT	0	0	0
OCT/NOV/DEC	1	0	1
JAN/FEB/MAR	0	0	0
APR/MAY/JUNE	0	0	0

Members			
RESULTS FOR 2017-2018			
QUARTER	MEMBER GROWTH NET GOAL	MEMBER GROWTH ACTUAL	DROPPED MEMBERS ACTUAL (including transfers)
JULY/AUG/SEPT	-3	22	27
OCT/NOV/DEC	22	10	39
JAN/FEB/MAR	-3	56	29
APR/MAY/JUNE	-3	0	0

GOALS AND ACTUAL NEW CLUBS CUMULATIVE



GOALS AND ACTUAL MEMBERS CUMULATIVE



DROPPED CLUBS: 1

22 CLUBS OF 44 ADDED 1 OR MORE NEW MEMBERS
--

GENDER DISTRIBUTION	
MALE	688 (67.72%)
FEMALE	328 (32.28%)
Women Percentage Fiscal Year Goal: 35%	

DROPPED MEMBERS	
DECEASED	9
CLUB CANCELLED	11
OTHER	74
TOTAL	94

[CLICK HERE FOR CUMULATIVE MEMBERSHIP DATA](#)

TOTAL FAMILY UNIT MEMBERS	257
FAMILY MEMBERS PAYING HALF DUES	132